



# COLUMBIA



# CONSERVATIONIST

COLUMBIA COUNTY CONSERVATION DISTRICT  
702 SAWMILL ROAD, SUITE 103, BLOOMSBURG, PA 17815  
570-317-9456      [www.columbiaccd.org](http://www.columbiaccd.org)      [facebook.com/columbiaccd](https://facebook.com/columbiaccd)

## 2021 ANNUAL REPORT Issue 24

### BOARD OF DIRECTORS

Don Edwards, *Chairman, Farmer Director*  
Doug Brown, *Vice-Chairman, Public Director*  
Debbie Jarrard, *Farmer Director*  
Dennis LeVan, *Farmer Director*  
Joan McCarty, *Public Director*  
Brian Sokol, *Farmer Director*  
Chris Young, *Commissioner Director*

### STAFF

Nancy Corbin, *Manager*  
Barry Travelepice, *Resource Conservationist II*  
Aaron Eldred, *DGLVR/Watershed Specialist*  
Beth Marie Gensemer, *Admin Asst/Bookkeeper*  
Patrick McCarthy, *Resource Conservationist I*  
Abby Sieg, *Watershed/Education Specialist*

### ASSOCIATE DIRECTORS

Brian Campbell      Ed Lease  
Jeff Giger      Jessica Lehman  
Matt Hess      Tonya Boston-Sagar

Contact Nancy at 570-317-9477 if you are interested in serving as an associate director.

### MISSION STATEMENT

To lead the citizens of Columbia County in sustainable use of our shared agricultural and natural resources through partnerships, education, and technical assistance, in order to assure the best quality of life for future generations.

### IN THIS ISSUE

#### 2021: A LOOK BACK

Pg 2 District News  
Pg 2 Barry Marks 45 Years of Service  
Pg 3 District Year-End Recap  
Pg 3 Permit Updates  
Pg 4 Agriculture Programs and Opportunities  
Pg 5 DGLVR Road Projects  
Pg 6 Watershed Group Happenings  
Pg 7 Environmental Education - Envirothon  
Pg 8 Environmental Education - Well Cap WS  
Pg 12 Kocher Park Updated Tree ID Project

#### 2022: A LOOK AHEAD

Pg 8 Native Plant & Tree Sale Highlights  
Pg 9 Native Plant & Tree Sale Order Form  
Pg 10 Upcoming Education & Outreach  
Pg 11 Local 2022 Events Scheduled  
Pg 12 Kocher Park & Johnson Flats Events



*Photo: A log-framed cross vane installed in Hemlock Creek at the Moore property as part of a fish habitat improvement and streambank stabilization project completed this summer in Hemlock Township.*



## DISTRICT NEWS

CONTACT: Nancy Corbin 570-317-9477 nancy.corbin@columbiaccd.org

### MORE CHANGES IN 2021

While 2021 was nowhere near normal, even with COVID-19 restrictions loosening, the CCCD persevered and welcomed change. We packed up and moved to the lower level of the Ag Services Building (Suite 103). We also welcomed three new employees: Beth Gensemer (Administrative Assistant/Bookkeeper), Aaron Eldred (DGLVR/Watershed Specialist), and Abby Sieg (Watershed Specialist and Environmental Educator). We wish the best for outgoing staff Kendra Craig, Rain Escovedo, Brittney Hartzell, and Tracey Oman.

*Photo (R): Staff cleanup at Kocher Park in October.  
(L-R): Aaron Eldred, Abby Sieg, Beth Gensemer, Patrick McCarthy, Barry Travepiece, and Nancy Corbin.*



### CELEBRATING 45 YEARS OF SERVICE

Barry Travepiece marked 45 years of service with the Conservation District in October! Barry's dedication and professionalism throughout his tenure is a testament to his character, creating a positive reflection of district programs. His wealth of knowledge is unsurpassed. Congratulations Barry!



*Photo: Barry with his service award from the District BOD*

### OUR BOARD OF DIRECTORS GROWS

The district welcomed three new Associate Directors in 2021. Matt Hess joined the Board in July, and Jessica Lehman and Jeff Giger joined the Board in December. All three grew up in Bloomsburg. Matt is the Executive Director of the Columbia County Housing & Redevelopment Authorities and is a residential planner. Jessica is an attorney with Hill, Turowski, James & Lehman, LLP and farms with her family. Jeff is a professional engineer for Team Ag, Inc. and serves on the Fair Board as Livestock Superintendent. Their knowledge and experience is a great asset for the Conservation District! Thank you to all of our Conservation District Directors and Commissioners for their time, talents, and continued support of district programs and events!



*Photo (L-R): Ed Lease, Dennis LeVan, Don Edwards, Debbie Jarrard, Joan McCarty, Brian Sokol, Doug Brown, Jessica Lehman, and Jeff Giger. (Missing from photo: Tonya Boston-Sagar, Brian Campbell, Matt Hess, and Chris Young)*

## DISTRICT YEAR-END RECAP

CONTACT: Nancy Corbin 570-317-9477 [nancy.corbin@columbiaccd.org](mailto:nancy.corbin@columbiaccd.org)

### 2021 PROJECT ACCOMPLISHMENTS

Thank you to our partners who collaborate on district projects for agriculture, streambank, buffer, and education projects to promote soil health and water quality

- **400 staff site visits** throughout Columbia County to assist landowners and farmers
- **\$629,400 of road projects** completed or contracted to reduce stream pollution for 7 municipalities
- **1,500 acres** of cover crops planted with grant fund assistance to reduce nutrients and sediment in streams and improve soil health
- Assisted in the completion of **28 REAP applications** totaling over **\$800,000** in tax credits
- **22 stream permits** issued for responsible work in our streams; **16 NPDES permits** issued for **500+ project acres** with **220 acres** of disturbed land
- **5 agriculture events** promoting sustainable practices
- **20 environmental education events and programs** reaching thousands
- **1200 trees** planted via 10 Million Trees Program
- More than **\$600,000 in grant funding** secured to complete on-farm conservation practices
- **5 new participants** in the Better Backyard Program to restore habitat and reduce stormwater impacts
- **\$220,000 Farmland Preservation Program** funds
- **10 sanitary well caps** distributed
- **Many staff trainings** to assist landowners with conservation projects

### GRANTS RECEIVED

#### American Rescue Plan Act

\$4,400 Office Technology

\$99,100 Kocher Park and Johnson Flats

Conservation Landscape/invasive species

#### DEP Environmental Education

\$3,000 Sanitary Well Cap Workshop

#### DEP Growing Greener

\$447,380 Multi County Soil Health

\$60,730 Stream Structures / Nutrient Mgmt Plans

#### Northcentral PA Conservancy

\$6,800 Moore Stream Structures

\$14,000 Rodriguez Stream Structures

#### National Fish & Wildlife Federation

\$216,200 Nutrient Reduction

#### PA Department of Agriculture

\$3,675 Spotted Lanternfly Circle Traps

### GRANTS APPLIED

#### DEP Countywide Action Plan

\$1.0M Columbia/Montour/Sullivan Counties Joint  
Nutrient and Sediment Reduction Projects

#### DEP Environmental Education

\$2,800 Rainfall Infiltration Trays and Soil Slaking Kits

#### DEP Growing Greener

\$368,125 Fishing Creek Watershed Projects

\$431,000 Nutrient Reduction Agriculture Projects

\$265,385 Kinney Run/Bloomsburg Projects

## ANOTHER BUSY YEAR FOR CONSTRUCTION ACTIVITIES

CONTACT: Barry Travepiece 570-317-9469 [barry.travepiece@columbiaccd.org](mailto:barry.travepiece@columbiaccd.org)

*Photo: Sediment basin trapping sediment from a Mifflin Township construction site*

The CCCD had another busy year of construction activities with a 30% increase in permits issued. This is due in part to the severe storms experienced in the region. Permits were issued for 16 sites and construction was ongoing on 12 sites. The District inspects these sites as needed to assure that the permit conditions are being followed and that the nearby streams are protected.

Landowners please note that permits are needed to remove gravel or stone from a stream, or to stabilize a streambank with stone or wood structures. Permits are not needed to remove logs or other floatable debris from a stream or culvert, provided the work can be done without putting heavy equipment into the stream. Working from the bank to lift material from the stream with a backhoe or similar equipment is the preferred method of removal. Skidding material through the water is not recommended when other methods are possible. If it is necessary to enter the stream with equipment, contact the District to determine required permits for the work.



### NEW NPDES SMALL CONSTRUCTION PERMIT EFFECTIVE MARCH 1, 2022

DEP published final guidance for the Pag01 permit. This new permit simplifies the design and review of small construction sites requiring a NPDES permit. Sites with less than 5 acres of earth disturbance and not in special protection watersheds may qualify for this permit. There are limits on the permanent impervious surface area after construction, and specific controls and practices will be required in the design.

New permit benefits include no intensive stormwater analysis and a reduced review and approval timeline.



# AGRICULTURE PROGRAMS AND OPPORTUNITIES

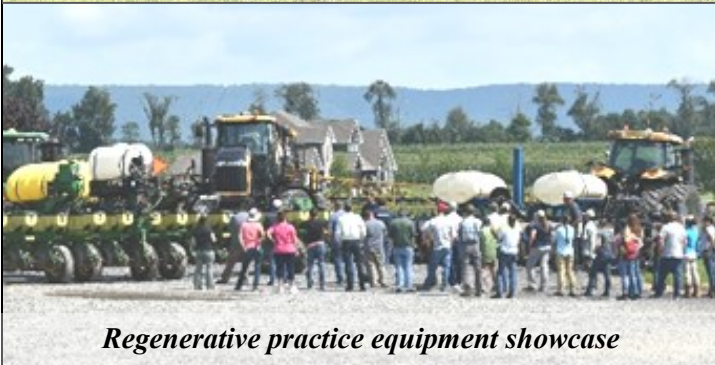
CONTACT: Patrick McCarthy 570-317-9468 [patrick.mccarthy@columbiaccd.org](mailto:patrick.mccarthy@columbiaccd.org)

## DISTRICT HOSTS SOIL HEALTH FIELD DAY

The district sponsored a soil health field day through a DEP Growing Greener Grant in July at Scattered Acres Farms in Numidia. Farmers and other ag industry members listened to presentations by Hoorman Soil Health Services on planting green and rolling cover crops. Attendees also viewed updated no-till and variable rate spray equipment that can be used to improve soil health and decrease input costs. Rosetree Consulting gave a field demonstration on corn nutrition requirements and the use of new technologies to improve yields. The day wrapped up with a panel discussion of local farmers describing their experiences with cover crops and planting green into live cover. Special thanks to the Richard family for hosting the event on their farm.



*Corn nutrient requirement demo to improve yields*



*Regenerative practice equipment showcase*

## REAP PROGRAM UPDATES

Select practices in the REAP tax credit program are now eligible for 90% reimbursement of costs

- Riparian forest buffers at least 50 ft wide
- Stream crossings and livestock exclusion fencing and related BMPs (animal trails/walkways, off-stream watering systems)
- Soil health program soil tests (PASA Soil Health Benchmark Study, NRCS Soil Health, CAP, etc.)

## FARM PROJECT FUNDS SECURED

Over \$600,000 for on-farm conservation practices was awarded in 2021. Funding sources are listed on page 3. Projects include a roofed heavy use areas at a beef operation, a dairy farm, and a wetland restoration project to manage stormwater. The district also secured funds to create 10 acres of wildlife meadow on farms. This funding is focused on field border areas as well as portions of fields that are too steep or wet to profitably farm. We are actively seeking landowners to take part in our soil health practice reimbursement programs. Funding is flexible and can be used for a wide variety of on-farm practices including: animal housing areas, creating pasture, reducing cropland erosion, cover crops, planting green, pollinator strips or any other concerns you have identified at your operation, contact Patrick McCarthy to schedule a site visit.

## LOAN EQUIPMENT FROM THE DISTRICT

**AerWay:** Use our Aerway in pastures or hayfields struggling with hard pans or compaction. The implement's tines allow for increased water retention and aeration with minimal soil disturbance. Increased channels for air and water provide better yields of hay and pasture forage and a decrease in runoff of water and nutrients.

**Spotted Lanternfly Circle Traps:** 2021 saw confirmed reports of spotted lanternflies (SLF) in Columbia County. The district has a limited supply of free circle traps to help control SLF. Please contact Patrick McCarthy if you suspect SLF on your property. Patrick can recommend a treatment plan once confirmed. A video on our website shows how to make a DIY circle trap.

**I&J Crop Roller:** Improve your soil health and reduce production costs with our six-foot wide crop roller. Roll mature cover crops for erosion protection, water infiltration, and enhanced weed control for increased crop yields.

*Photo (R):  
Crop roller on  
display at the  
Bloomsburg Fair*





# ROAD PROJECTS SAVE TIME, MONEY, & PROTECT WATER RESOURCES!

CONTACT: Aaron Eldred 570-317-9478 aaron.eldred@columbiaccd.org

**Purpose:** Sediment and aggregate from rural roads have a large impact on our streams. The CCCD receives annual funding available to municipalities through the State Conservation Commission's (SCC) Dirt, Gravel, and Low Volume Road Program (DGLVR). Municipalities can apply for funding to help rehabilitate public roads that are negatively affecting our local streams by reducing impacts through road projects.

**Funding:** Through our Quality Assurance Board, the District administers SCC funds to improve the water quality of our streams. Approximately \$80,000 for low volume road projects (paved or sealed roads with less than 500 cars per day) and \$370,000 for dirt and gravel road projects that impact a stream. In 2021, \$629,430 was paid to eligible municipalities for DGLVR projects.

**Eligibility & Training:** Projects must meet environmental requirements to be considered for funding. Projects must negatively impact a stream and reduce environmental impacts. Environmentally Sensitive Maintenance (ESM) training is required, and permits, if needed, must be obtained. Training is required and available. See Page 11 for a training opportunity. Call the District to schedule a site visit and begin the application process!

**\* 2022 funding round application deadlines: April 15, July 15, September 15 \***

## **Equipment Loan Program:**

Scarifying Grader Blades ~ Recycles hard packed aggregate and removes potholes/gullies with less effort.

New PTO Leaf Blower ~ Clears ditches and culverts of debris without the need to re-grade/re-shape ditches, which can remove vegetation and displace sediment to our streams.



**New in 2021: Loan our PTO Leaf Blower**

## **2021 DGLVR Contracted Projects:**

Heights Rd, Berwick Boro (DG)  
Taylor Rd, Madison Twp (DG)  
Belles Rd, Orange Twp (DG)  
Yost Hollow Rd, Briar Ck Twp (LV)

## **2021 DGLVR Completed Projects:**

Keller School Rd, Cleveland Twp (DG)  
Shultz Hollow Rd, Jackson Twp (DG)  
Buck Rd, Orange Twp (DG)

## **PROJECT HIGHLIGHT—BUCK ROAD, ORANGE TOWNSHIP**



Buck Road was a three-year, phased project involving 6,200 tons of fill, 6 new cross pipes, 70' of underdrain, 150' of ditch stabilization, 5 broad-based dips and 2,700 linear feet of DSA placement. Each of these ESM practices prevent sediment from entering Stony Brook, an exceptional value, wild trout stream, while reducing road maintenance requirements and costs for Orange Township.



Photo L-R: Installation of new cross pipe, cross pipe outlet with stabilization, and finished DSA surface.



**Creating better roads and cleaner streams!**



## WATERSHED GROUP HAPPENINGS

CONTACT: Abby Sieg 570-317-9491 [abby.sieg@columbiaccd.org](mailto:abby.sieg@columbiaccd.org)

### **Briar Creek Association for Watershed Solutions (BCAWS)**

In 2021 BCAWS maintained a naturalized stream project and monitored two streambank reconstruction projects. They analyzed and offered remedies to flooding in a Briar Creek sub-watershed that was hit hard by extreme rainfall events as well as consulted local residents on best practices for property maintenance and overall watershed health. Members monitored invasive and non-native species occurrence and held webinars on various environmental topics. BCAWS meets on the 4<sup>th</sup> Wednesday of each month.



[www.columbiaccd.org/bcaws](http://www.columbiaccd.org/bcaws)

Photo (R): BCAWS President Ben Franek and watershed project volunteers



**Roaring Creek Valley Conservation Association (RCVCA)** RCVCA continued quarterly water monitoring at 14 sites in 2021. They also provided a stipend for PSU student, Emma Steely, to conduct macroinvertebrate surveys in the watershed. Emma presented her research in early January 2022. RCVCA conducted the annual trash pickup at their adopted highway site on SR 42 in Weiser State Forest's Roaring Creek Tract. Several association members assisted in the 2021 Hellbender Half Marathon & 5k Race in August and at a display booth during the Weiser State Forest's Fall Drive-Thru. RCVCA plans to continue monthly meetings, using Zoom due to COVID-19. The group looks forward to working with landowners to identify and support conservation work in the watershed. RCVCA meetings are on the 3<sup>rd</sup> Thursday of each month. Visit [www.rcvca.org](http://www.rcvca.org) or follow them on Facebook.

Photo (L): Scholarship awardee Emma Steely works on RCVCA-supported research

CONTACT: Aaron Eldred 570-317-9478 [aaron.eldred@columbiaccd.org](mailto:aaron.eldred@columbiaccd.org)

**Catawissa Creek Restoration Association (CCRA)** In addition to maintaining three passive water treatment facilities that feed Catawissa Creek to improve water quality impacted by acid mine drainage, CCRA hosted a tour of the watershed with DCNR officials. As a result of the tour and collaboration with CCRA members and partners to submit an application, Catawissa Creek was one of four PA waterways nominated for River of the Year by DCNR! CCRA meets the 3<sup>rd</sup> Wednesdays on even months. Contact the District for time and location. [www.thecatty.org](http://www.thecatty.org).

Photo (R): Creek tour with DCNR and CCRA members and partners



Photo: Members at the FCWA Container Garden Contest

**Fishing Creek Watershed Association (FCWA)** FCWA purchased water quality monitoring equipment in 2021 to track water quality data. Supporting Kocher Park continued with cleanups, rain garden maintenance, and promoting the park. Money raised at their annual Container Garden Contest was used to buy plants for the park. The group organized numerous educational presentations throughout the year including pollinators, climate resiliency, trees of Kocher Park, watershed geology, and more. FCWA also hosted a Private Well Water Education and Testing workshop by Penn State Extension for county residents. FCWA meets on the 2<sup>nd</sup> Monday of each month.

[www.fcwa.net](http://www.fcwa.net)

# ENVIRONMENTAL EDUCATION - ENVIROTHON

CONTACT: Nancy Corbin 570-317-9477 nancy.corbin@columbiaccd.org



The Envirothon is a hands-on environmental problem-solving competition that provides team building and leadership experiences for students. Each year, high school and middle school students from Columbia, Montour, Northumberland, Snyder and Union counties compete at our Susquehanna Valley Regional Envirothon competitions. The winning high school team from each county goes on to compete at the PA State Envirothon competition. After both competitions were canceled in 2020 and hosting virtual competitions in 2021, staff, volunteers, and students alike are excited for the 2022 Envirothon!

## 2021 ENVIROTHON GOES VIRTUAL

Due to the pandemic, the 2021 County and State High School Envirothons were virtual competitions. Columbia and Montour Counties partnered to administer the high school tests. Central Columbia High School's team, consisting of Brody Beaver, Caroline Fitt, Jane Corbin, Lucas Zimmerman, and Olivia Hubler, took first place in the county and overall. Their team advisor was Ag Teacher and CCCD Director, Doug Brown. Central finished 11 out of 58 counties in the state competition!

## ENVIROTHON STUDY RESOURCES

The CCCD has a variety of resources available to students and advisors to help prepare for the Envirothon. Teachers in the county can also borrow these resources any time to help prepare and teach lessons on topics such as water quality, wildlife or tree identification, and many more.

A highlight of our supplies is the Urban Wildlife Kit donated by the PA Game Commission. The kit includes teacher and student guides, animal skat and tracks replicas, three animal skulls, and 12 animal pelts. The CCCD has a variety of skulls available for use that are not in the kit, including a black bear!

*Photo: Dan Lynch, PGC, explaining the Urban Wildlife Kit. Source: YouTube*



*Photo Above: Central Columbia's Envirothon team who took first place in the regional competition. L-R: Lucas Zimmerman, Mr. Seesholtz (advisor), Caroline Fitt, Olivia Hubler, Jane Corbin, Mr. Doug Brown (advisor), Brody Beaver.*

## 2022 ENVIROTHON

The Susquehanna Valley Regional Envirothon competitions have returned! The high school competition will be held on April 26, 2022 at the Shikellamy State Park Marina, and the middle school competition will be held on May 10, 2022 at the Montour Preserve.

Students will be tested on five different topics, including aquatics, soils, wildlife, forestry, and the current issue.

The winning high school team from each county will compete in the State Envirothon on May 25, 2022 at Camp Mount Luther. The state event consists of station testing and a digital, oral presentation for the current issue: Waste to Resources.

**Thank you to our 2020 County Envirothon sponsors. We have held donations from the canceled 2020 event to use for the 2022 in-person Envirothon. We appreciate your support!**

Sons of the American Legion Post 273, Catawissa American Legion Post 541, Briar Creek Association for Watershed Solutions, Catawissa Creek Restoration Association, Central Susquehanna Woodland Owners Association, Bloomsburg Elks Lodge 436, First Columbia Bank, Fishing Creek Sportsmen's Association, Roaring Creek Valley Conservation Association, Scattered Acres Farms, Stackhouse & Son



## ENVIRONMENTAL EDUCATION & OUTREACH

CONTACT: Abby Sieg 570-317-9491 [abby.sieg@columbiaccd.org](mailto:abby.sieg@columbiaccd.org)

### WATER WELL CAPS DISTRIBUTED AT COALITON SANITARY WELL CAP WORKSHOP


The Columbia-Montour Coalition for Source Water Protection (CMCSWP) received a DEP Environmental Education Grant to conduct sanitary well cap workshops. Chairperson and BU Professor, Jen Whisner, presented a workshop on residential water wells, water contaminants, and how to protect your drinking water. Each workshop participant utilized a BU groundwater model to visualize ways contaminants can enter wells and received a sanitary well cap for their well.



**2022 Well Cap  
Workshop Locations TBA**  
March 7 & March 28

*Photo: Jen Whisner helps workshop participants utilize groundwater models at the November 2 sanitary well cap workshop at the Ag Services building*

## 2022 NATIVE PLANT & TREE SEEDLING SALE NOW IN PROGRESS!

We have new varieties that are sure to please!  
Use the order form on the next page or download from our website. 

### Why NATIVES:

- Native plants require less maintenance like fertilizers, pesticides or watering.
- Native plants are critical to pollinators and crop production.
- We offer native varieties not typically available at retail stores and nurseries.
- Non-native evergreen and fruit trees are also available.

### 2022 HIGHLIGHTS:

- Fruit** varieties this year include apple, peach, plum, blueberry and elderberry.
- PawPaw** is a deciduous tree that is great for riparian areas and produces a delicious fruit, described to taste like a mix between a banana and mango.
- Erosion Control Seed Mix** can help achieve that quick, green color and fast erosion control with strong, fibrous roots.
- Mason Bee Houses** support native pollinators and are maintenance-free, handmade by Central Columbia's Ag Science students.
- Color and bloom guide** to help you enjoy a variety of colors and blooming April-September! Check out our catalog for in-depth descriptions and pictures.

Pre-Order Deadline: March 4th  
Last name orders A-L: May 5th  
Last name orders M-Z: May 6th  
Remaining Preorders + Public: May 7th

Sale proceeds support environmental education in  
Columbia County!

**PREORDER ASSIGNED  
PICK UP DATES AND DRIVE  
THROUGH PICK UP ONLY!**



# Columbia County Conservation District 2022 Plant Sale

<u>CUSTOMER INFORMATION BOX</u>	
Name:	Phone:
Street Address:	
City/State/Zip Code:	Email:

**ORDER DEADLINE**  
**Friday, March 4th**  
 for best selection and availability

**ATTENTION:**  
**PREORDER ONLY**  
**PICKUP DATES**  
**Thursday, May 5**  
 11am-5pm  
**Friday, May 6**  
 9am-5pm

**PREORDER + PUBLIC**  
**PICKUP DATES**  
**Saturday, May 7**  
 9am-12pm

<u>NATIVE EVERGREEN TREES</u>		Height	Price Each	Qty	Amount Due
1	Balsam Fir	4-8"	Bundles of 25 \$15.00/25		\$
1	Eastern White Pine	6-10"	Bundles of 25 \$15.00/25		\$
1	Norway Spruce (non-native)	6-12"	Bundles of 25 \$15.00/25		\$
<u>PEACH &amp; APPLE TREES</u>		Height	Price Each	Qty	Amount Due
	"Redhaven" Yellow Peach	4-6'	\$20.00		\$
2	"GoldRush" Apple (late-season)	4-6'	\$17.50 EA		\$
2	"Honeycrisp" Apple (mid-season)	4-6'			\$
One GoldRush + One Honeycrisp			Price/pair \$35.00 # Pairs		\$

<u>NATIVE DECIDUOUS TREES</u>		Height	Price EA	# Singles	5 per bundle	# Bundles	Amount Due
1	American Plum	8-12"	\$2.00		\$9.00		\$
1	PawPaw	12-36"	\$2.00		\$9.00		\$
1	River Birch	12-36"	\$2.00		\$9.00		\$
1	Sugar Maple	4-8"	\$2.00		\$9.00		\$
1	Sycamore	12-36"	\$2.00		\$9.00		\$

<u>NATIVE SHRUBS</u>		Height	Price EA	# Singles	5 per bundle	# Bundles	Amount Due
1	Arrowwood	10-12"	\$2.00		\$9.00		\$
1	Elderberry	10-15"	\$2.00		\$9.00		\$
1	Red Osier Dogwood	10-12"	\$2.00		\$9.00		\$

<u>NATIVE GROUND COVER</u>		Plug	Price per Pack	# Packs	Amount Due
	Blue Rug Juniper	2-4" (pot)	\$28.00/10		\$
	Dwarf Blue Star	4-1/2"	\$12.00/4		\$
	Foam Flower	4-1/2"	\$12.00/4		\$

<u>NATIVE PERENNIALS</u>		Plug	Price per 4-pack	# 4-packs	Amount Due
	Black-Eyed Susan	4-1/2"	\$12.00		\$
	Blue-Eyed Grass	4-1/2"	\$12.00		\$
	New York Ironweed	4-1/2"	\$12.00		\$
	Swamp Milkweed	4-1/2"	\$12.00		\$
	White Wood Aster	4-1/2"	\$12.00		\$
	Wild Columbine	4-1/2"	\$12.00		\$

<u>NATIVE BLUEBERRY BUSHES</u>			Price Each	Quantity	Amount Due
1,2	Aurora (very late season harvest)	1 Gal. cont.	\$12.00		\$
1,2	Spartan (early season harvest)	1 Gal. cont.	\$12.00		\$

<u>NATIVE WILDLIFE HOUSES</u>				Quantity	Amount Due
	Handmade Bluebird House		\$10.00		\$
	Handmade Mason Bee House		\$10.00		\$

<u>SEED MIXES</u>				Quantity	Amount Due
	Annual/Perennial Wildflower Mix	1 (1 oz.) Packet = 200 sq. ft.	\$5.00		\$
	Erosion Control Mix	1 (.5 lb) bag = 500 sq. ft.	\$5.00		\$

1	CREP approved trees & shrubs			Sub-Total	\$
2	Do best when both varieties planted			6% sales tax	\$
Note: all trees and shrubs are bareroot seedlings				TOTAL	\$

Please Make Checks Payable To:  
**Columbia County Conservation District**  
 Return order form and check or credit card form (to the right) to the CCCD at:  
 702 Sawmill Rd, Ste 103, Bloomsburg, PA 17815

Name on Card: \_\_\_\_\_

Card Number: \_\_\_\_\_

Expiration Date: \_\_\_\_\_

Text or Emailed Receipt? (circle one) ☐ Yes ☐ No


Cell Phone/Email: \_\_\_\_\_

Billing Zipcode: \_\_\_\_\_

Security Code: \_\_\_\_\_

Signature: \_\_\_\_\_

**For Credit Card Purchases:**  
 Fill out information above or drop off order form in person to complete transaction.  
 A 3% convenience fee will be applied to your order



Your order can help your property become eligible for  
 "Better Backyards" Certification.  
 See [www.columbiaccd.org/betterbackyards](http://www.columbiaccd.org/betterbackyards) for more info!



Thank you for your support!

All Proceeds from this sale go towards environmental education programs in Columbia County.  
 The Conservation District cannot guarantee survival of plants and bareroot seedlings after pick-up dates.

## UPCOMING ENVIRONMENTAL EDUCATION & OUTREACH

CONTACT: Beth Gensemer 570-317-9456 beth.gensemer@columbiaccd.org

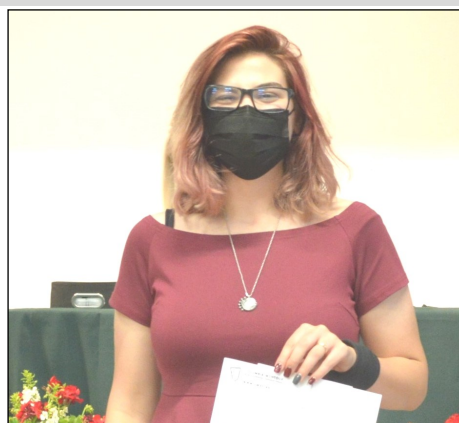
### CONGRATULATIONS TO OUR 2021 SCHOLARSHIP WINNERS!



Brooke Wolfinger  
Central Columbia High School  
Edgar "Ted" Fenstermacher  
Scholarship



Lily Sudol  
Southern Columbia High School  
Maryruth Wagner Scholarship



Katie Miller  
Columbia-Montour Area Vo-Tech  
Lavere McClure Scholarship

### 2022 SCHOLARSHIP APPLICATIONS ARE DUE APRIL 11, 2022

Edgar Fenstermacher Scholarship - \$500

Senior pursuing a degree in agriculture

Lavere McClure Scholarship - \$500

Senior pursuing a degree in education focused on ag or science

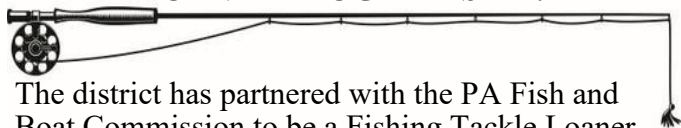
Maryruth Wagner Scholarship - \$500

Senior pursuing a degree in environmental/natural sciences

Conservation Leadership School - 2 \$300  
resource issues, conservation, and wildlife.

Students that completed 9th grade. One week session on natural  
Two \$300 scholarships toward tuition - sign up with a friend!

### CCCD NOW A FISHING TACKLE LOANER PROGRAM SITE!



The district has partnered with the PA Fish and Boat Commission to be a Fishing Tackle Loaner Program Site (FTLP). The FTLP provides people with fishing equipment without requiring them to purchase gear. This is ideal for people, families, or groups who want to try fishing before purchasing gear. Staff will become certified fishing instructors this spring. Once certified, the district, as a FTLP, can offer fishing programs, or loan equipment without staff present. See our website for license requirements and details on equipment availability. Site equipment includes 10 rods, reels and tackle.

### MAKE A DIFFERENCE

Visit our website for program information like these and make an impact in Columbia County!



### EARTH DAY POSTER CONTEST

**Deadline April 22, 2022**

Thank you to Brian (Farmer Moofy) and Erika Campbell for their continued sponsorship of the CCCD Poster Contest with cash prizes and corn certificates for participating students.

2022 Theme: Healthy Soil Healthy Life  
Deadline: April 22nd

Students will use art and science as they learn about healthy soils. Winning posters are entered into the State Poster Contest. Congratulations to Kathryn Polstra, Bloomsburg Christian student, for placing first, 10th-12th grade category, for both Columbia County and the State! The 2021 theme was Healthy Forests, Healthy Communities.



Photo: PA State winner Kathryn Polstra with parents and Bloomsburg Christian teachers



## LOCAL EVENTS SCHEDULED

CONTACT: Beth Gensemer 570-317-9456 beth.gensemer@columbiaccd.org

### Local DGLVR Breakfast Training

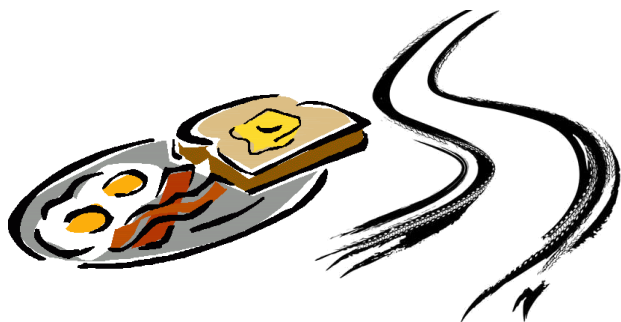
**WHO:** Geared towards municipal staff including; managers, supervisors, secretaries, treasurers, and road crew personnel

**WHAT:** DGLVR Program Overview training, full breakfast provided

**WHEN:** March 8<sup>th</sup>, 2022 – 8AM-11AM

**WHERE:** Ag Services Building., lower level  
702 Sawmill Rd. – Bloomsburg

Please RSVP by **February 15, 2022**



### *Women in Agriculture and Conservation*

*March 16, 2022*

**9:00am-2:30pm**

**Registration/Breakfast at 8:30am**

**St. Luke Lutheran Church**

**9 St. Luke's Way Bloomsburg  
Bloomsburg**

Door Prizes \* Interactive Activities \* Networking

- Cropland Conversion
  - Diversifying your Operation
  - Solar Energy
  - Agricultural Law
  - Invasive Species Management
- Plus, make your own Spotted Lanternfly circle traps!



\$10 Registration RSVP by March 7th  
Light Breakfast and Hot Lunch

*Thank you to our Sponsor: First Columbia Bank*



### 12TH ANNUAL WOODCOCK WATCH

**March 30, 2022 6:45pm Orangeville**

*Attention local birders, wildlife naturalists, scouts,  
and other interested people:*

Come and enjoy an evening hike to seek out the  
wonderful mysterious woodcock at the home of

Chris and Pam Young in Orangeville!

Learn all about woodcock habitat and benefits, their  
unusual behaviors, and observe woodcocks in their  
natural habitat. Register with the District.

### 2022 AG CONFERENCE

**Wednesday February 23, 2022**

**9:30am to 2pm**

**Registration/Breakfast at 9:00am**

**Pondue Farms**

**270 White Church Road, Elysburg**

Core and category pesticide credits will be available!  
Participate in multiple sessions related to pesticides,  
personal protective equipment, invasive species and  
pest management, and how to control erosion and  
pesticides to improve water quality.

**Registration fee is \$10**

**Light Breakfast and Hot Lunch**

RSVP Feb 11th



**COLUMBIA CONSERVATIONIST**  
**Columbia County**  
**Conservation District**  
**702 Sawmill Road, Suite 103**  
**Bloomsburg, PA 17815**

**NONPROFIT ORGANIZATION**  
**U.S.POSTAGE PAID**  
**BLOOMSBURG, PA 17815**  
**PERMIT No. 147**

HELP US UPDATE OUR  
MAILING ADDRESSES.  
CALL WITH ADDRESS  
CHANGES OR BETTER  
YET—HOW ABOUT AN  
EMAIL ADDRESS?

CCCD  
NEWSLETTERS  
Past quarterly news-  
letters and signup at

CURRENT RESIDENT OR



COLUMBIA COUNTY  
CONSERVATION DISTRICT

## Frank W. Kocher Memorial Park

**Enjoy Kocher Park & Johnson Flats - your local creek side nature experience!**  
**1519 State Route 487 Orangeville, PA**

CCCD board member, Joan McCarty, lead updating the 2015 Girl Scout Silver Award Tree Identification Project after storm damage. 34 tree identification signs were made by Doug Brown, CCCD board member, and his students at Central Columbia H.S. Sign posts were carved and donated by Rich Kisner, Park Committee member. Abby Sieg, staff, updated the tree ID map available at the park for visitors.

*Photos: CD  
Directors Joan  
McCarty and  
Doug Brown  
working on the  
updated tree  
ID signs at the  
park*



Kocher Park has been a wonderful outdoor recreation outlet for the public during the pandemic. The park has been very busy with visitors enjoying the sights and sounds of nature.

Check our website or Facebook for upcoming events.

April	Spring Cleanup
June	Fish n Fun
June-July	Summer Day Camps
Summer/Fall	Community Hikes

**Be a Friend of Kocher Park!**

*A Leave No Trace park  
maintained by volunteers, donations, and grants*